

Wrapped Animal Drawings

Using Cross Contour Lines

Step 1

- Find an image of an animal
 - Can be found in a magazine, book, or the internet
- Image should be about the size of an index card or bigger
- Image should be preferably of an animal's head, or upper half of their body in other words CLOSE UP!
- The animal should take up about $\frac{3}{4}$ of the page to create an interesting composition

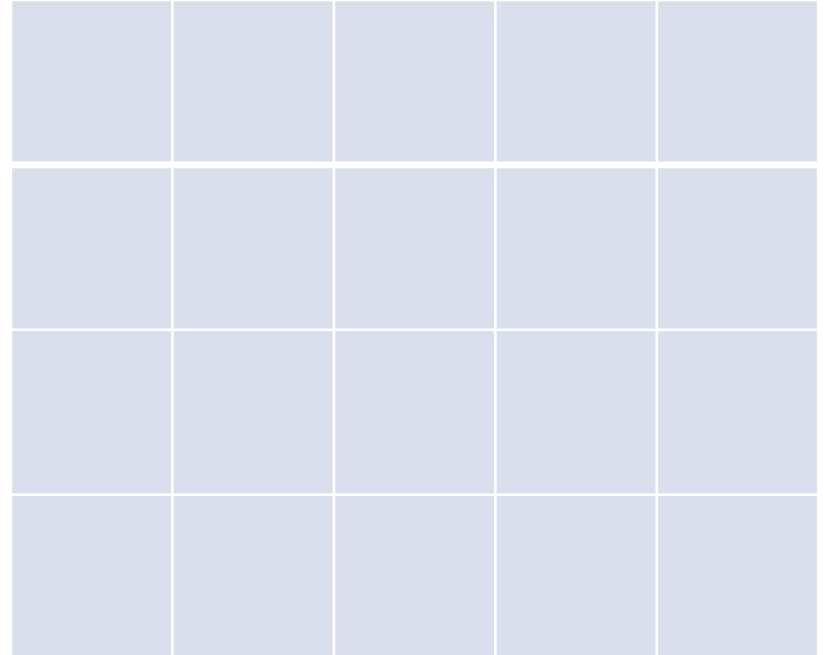
Step 2

- Grid your image using 1" x 1" squares



Step 3

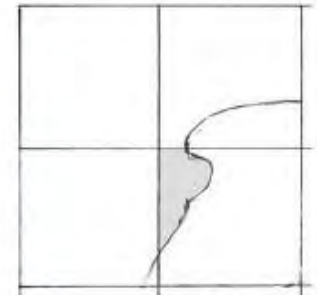
- Grid your Large paper.
- I would suggest enlarging your image.
 - For example, if your original photograph had 1" x 1" squares, I would suggest creating 2" x 2" squares, or even 3" x 3" squares



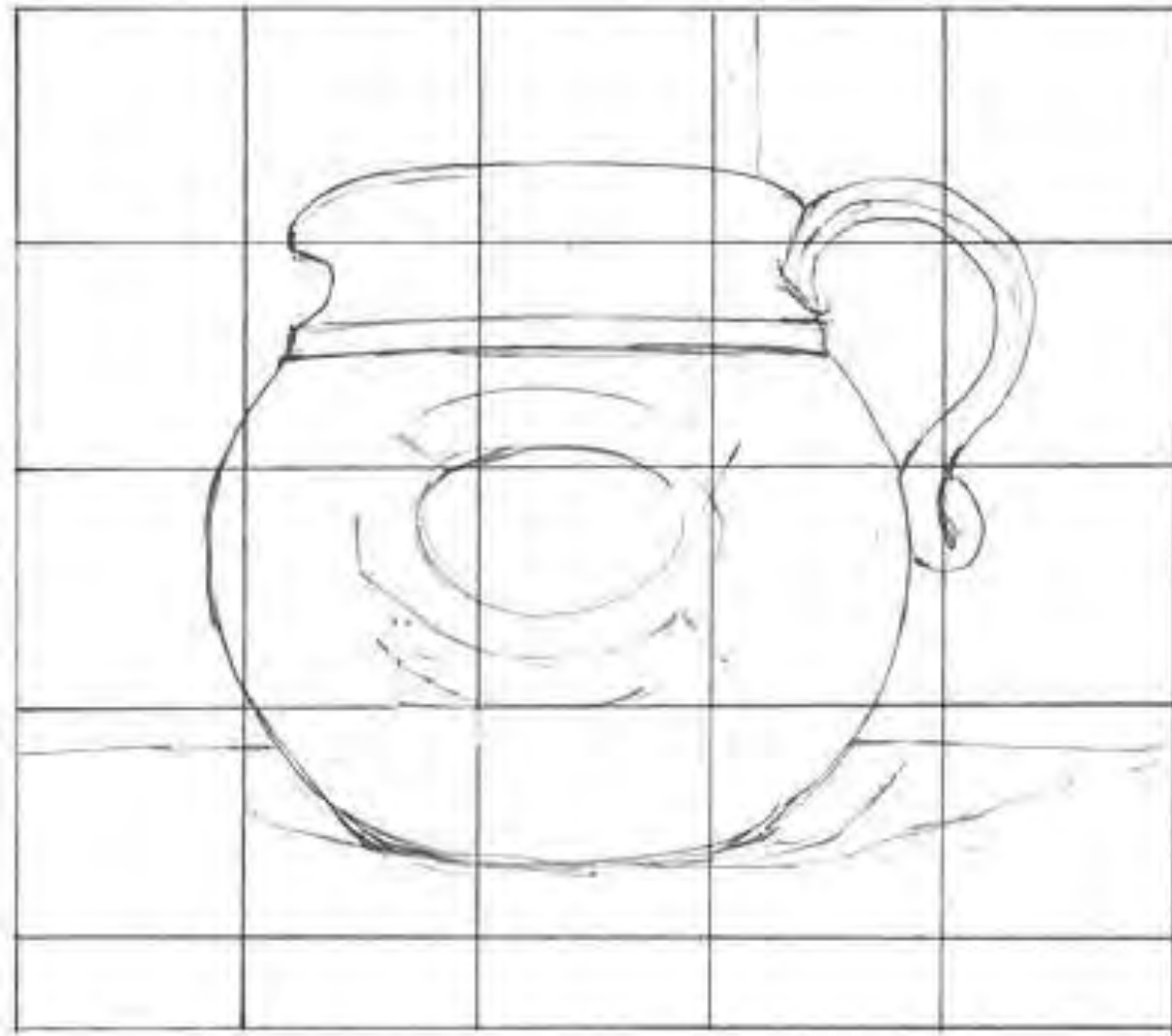
Step 4

- Copy the image exactly as shown from the photograph onto your white paper
- Be sure to copy exactly what you see, box by box

- Use a LIGHT pencil



- Create a CONTOUR line drawing



Step 5

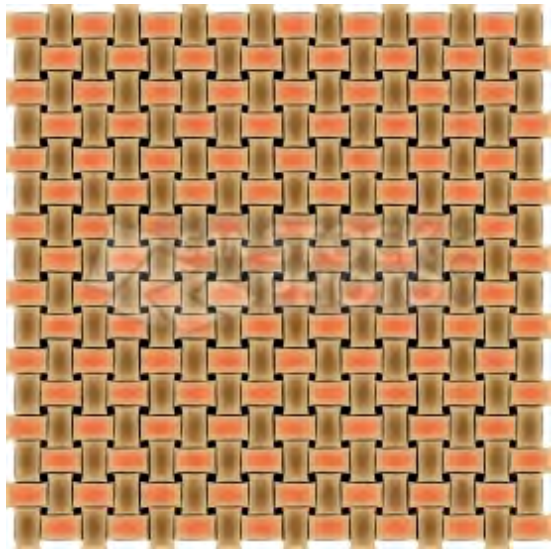
- Create CROSS CONTOUR lines through your piece
- These will act as the “ribbons” that wrap around your animal
- Take into consideration the space between each ribbon
- Suggestion: Make the ribbons, then go back and erase to show how they overlap (I will demo this)

Step 6

- Once approved, outline your entire drawing in sharpie marker
- Outline the ribbons, and the entire animal being very careful with your overlaps

Step 7

- Using pencils, shade the ribbons which wrap your animal (shade according to light source)
- Take into consideration the different types of pencils (6B is dark HB is light)
- Take into consideration the value changes as the ribbons overlap



Step 8

- Shade the mouth and eyes last, using colored pencil
- To make them look realistic, consider adding a strong highlight or reflection!



Step 9

- Using sharpie, go back into the spaces between the ribbons, and color solid black between

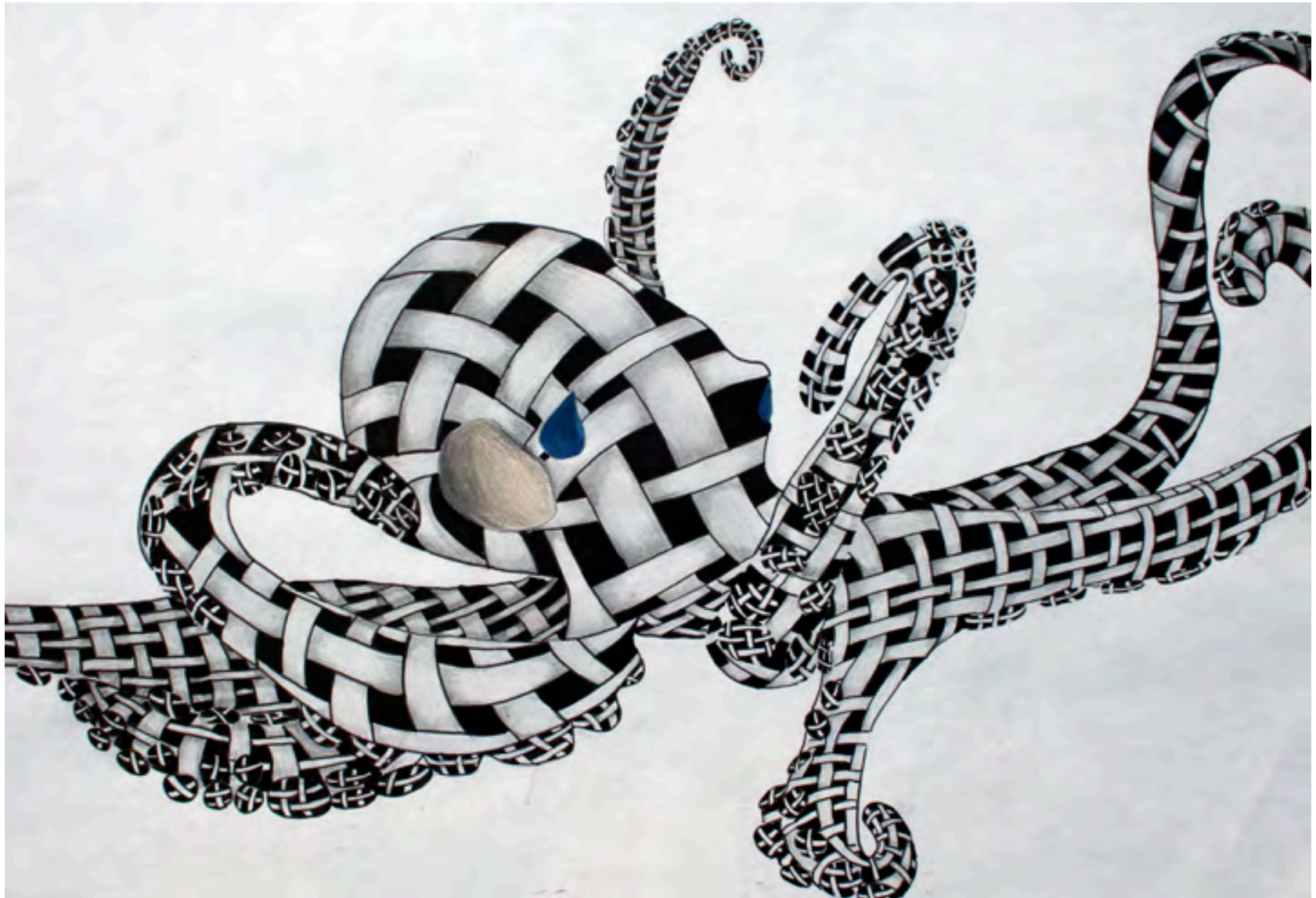
Extra Things to Consider

- The bigger the space between the ribbons, the more black will be added
- Therefore, it will create more of a shaded area, or an area going back into space





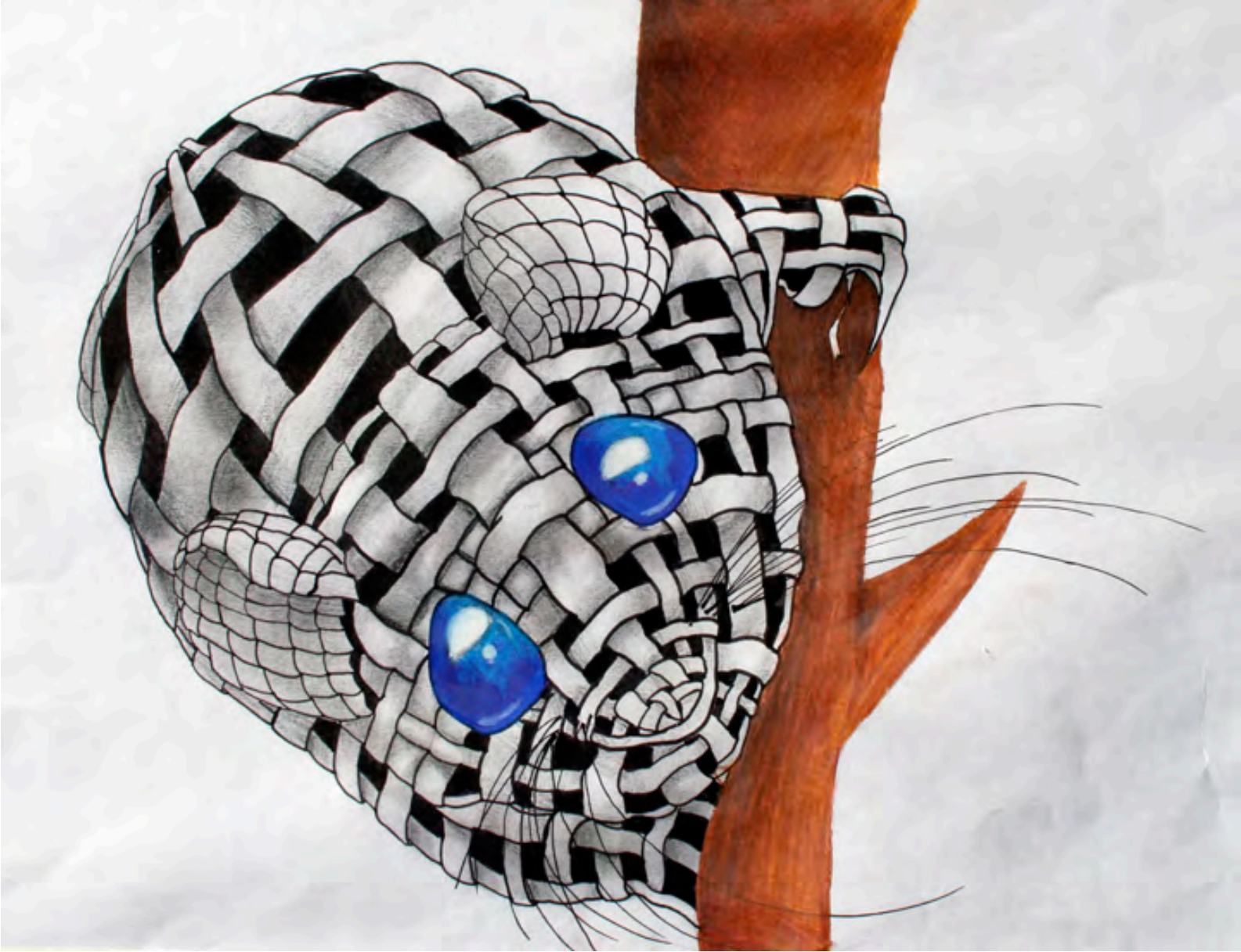








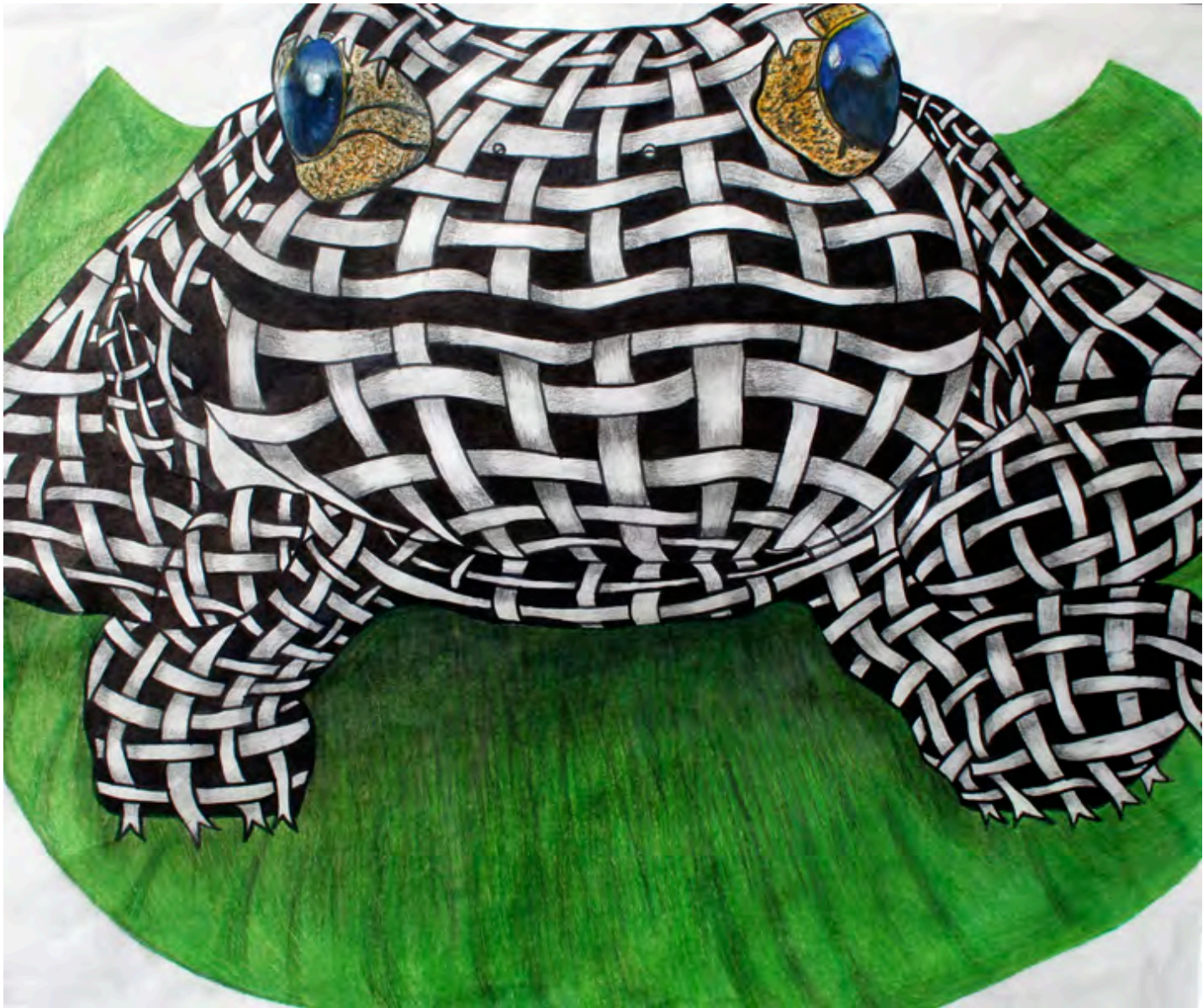






















Requirements

- Approved portrait of an animal
- Complete an accurate line drawing that uses 3/4's of the page
- Must “wrap” your animal with contour line ribbons of varying lengths and widths
- Shade using pencils and finish with sharpie
- Complete eyes and mouth with colored pencils to make them realistic
- Complete rubric and questions for a grade